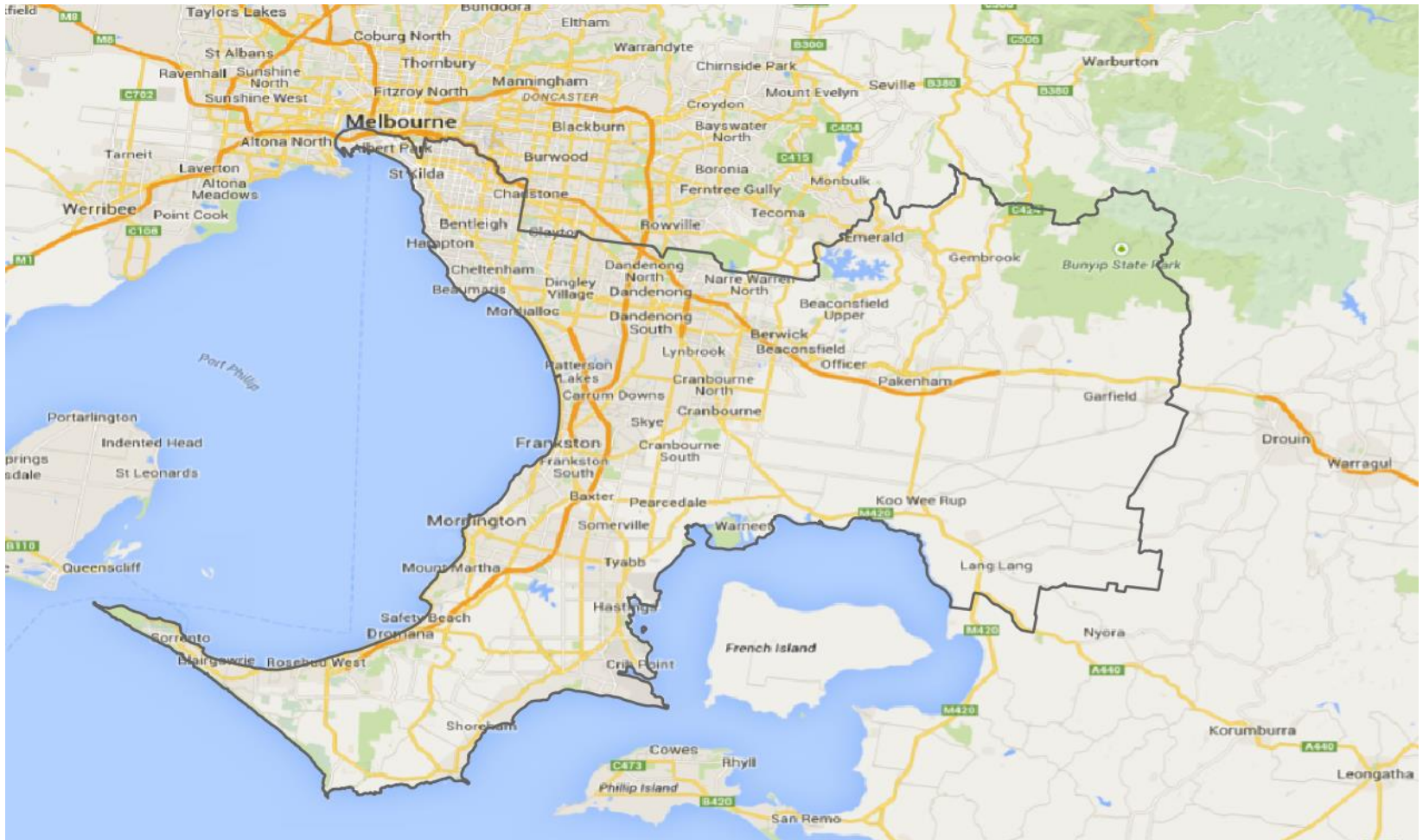


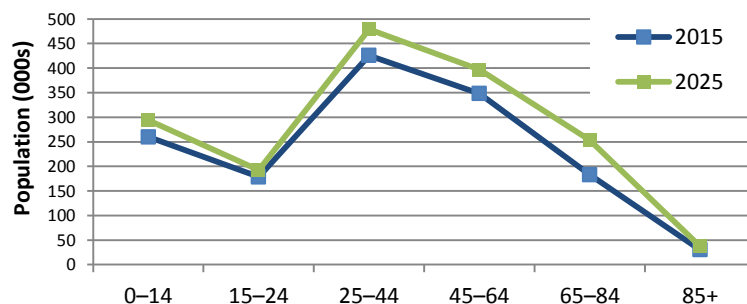
Catchment briefing





Demographics

Current and projected population



- The largest population bracket will continue to be those of working age (25-64)
- The largest growth bracket is 65-84 y.o. (+70,000)



Socio-economic factors

- 28% of households earn less than \$650 p/w
- 11.5% of mortgage holders experience mortgage stress
- 23.6% of renters experience rental stress
- 14% of people delayed medical consultation because they could not afford it
- 11% of people delayed buying prescribed medication because they could not afford it
- 8.5% low-income, welfare-dependant families (with children) overall — range 2.7% to 15%
- 81% of 16 year olds were in school full time
- \$619 gambling machine losses per person
- 5.3% unemployment
- 7% of people are 75+, 36% live alone



Life expectancy

- Average life expectancy is 84.5 years for females and 80.8 years for males



Cultural diversity

Of SEMPHN's residents:

- 0.45% are Aboriginal and/or Torres Strait Islander
- 23.3% born in non-English-speaking countries
- 3% born overseas have poor proficiency in English



Services

- 3 local hospital networks
- 14 public and 24 private hospitals
- 1,938 general practitioners at 479 general practices
- 1,008 medical specialists
- 1,148 pharmacists at 341 pharmacies
- 423 dental services
- 11,509 residential aged care beds



Chronic illness

- 54% are overweight or obese, 10% have asthma, 4% have diabetes

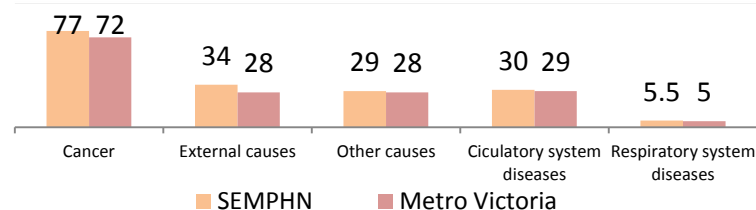
Chronic disease prevalence (%)

Chronic conditions	0-14	15-24	25-44	45-64	65+
One	12	17	21	32	32
Two	1	2	4	14	27
Three			1	5	15
Four				1	5
≥ Five				1	3



Deaths

- Premature deaths of 15–64 year olds



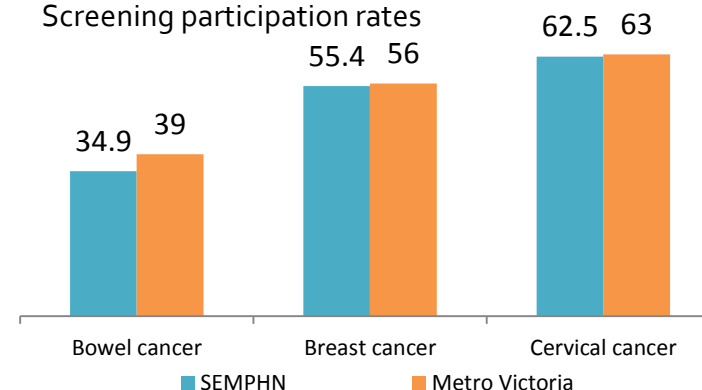
Unhealthy behaviours

- 18.3% 18+ smoke
- 48% don't consume 2 or more serves of fruit/day
- 27.5% don't meet physical activity guidelines



Cancer screening

Screening participation rates



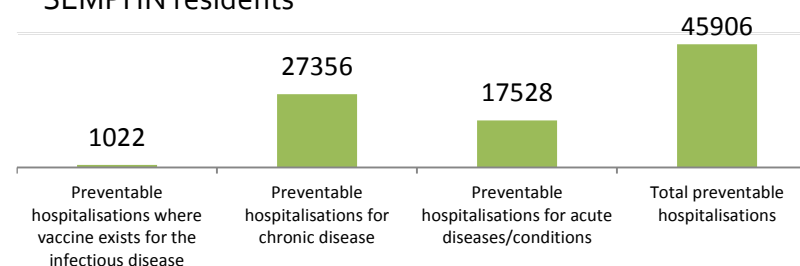
Emergencies

- 236 Emergency presentations per 1,000 pop.
- 38.5% Emergency presentations could be treated in primary care



Hospital utilisations

Potentially-preventable hospitalisations of SEMPHN residents



Index of relative socio-economic disadvantage (2011, SA1, State decile)

